

# Aficio® 3260C

The New Benchmark for  
High-Speed Color Communications

PRINT

COPY

SCAN



**RICOH®**

High-speed color communications with quality and efficiency.

3260C

## The Better Way to Produce Color Documents

Your department uses color for all its important communications, from full-color presentations and highlighted spreadsheets to mixed color and black & white pages in finished reports and proposals. You need a single device that all users can share with equal speed and simplicity. You need the RICOH® Aficio® 3260C – the ideal solution for all of your department's color and black & white document production and distribution applications.

### Step Up to Speed and Quality

Whether you're trading up from a fleet of desktop color printers or seeking to add in-house color to your employees' resources, the Ricoh Aficio 3260C is a total solution for the production and distribution of every document in your office.

The Ricoh Aficio 3260C is designed for productivity, capable of up to 45 ppm in full color and a brisk 60 ppm for black & white pages. It will reduce your outsourcing expenses and eliminate costs associated with supporting the multitude of low-volume color printers installed across your organization. The powerful Ricoh Aficio 3260C is an asset you can depend on for the fast and cost-effective production of all your business color applications.

True 600 dpi scanning and printing produces superior image quality, while a number of color calibration and registration technologies ensure sharp, consistent results so every page always looks its best. The Ricoh Aficio 3260C uses a new oil-less toner formula that delivers a rich color gamut and hardcopies with just a touch of gloss – perfect for highlighting your department's professional image with smooth blends, solid fills and crisp text.

The Ricoh Aficio 3260C can be equipped with your choice of finishing options that will enhance the impression of every document as well as the reputation of your business. Create duplexed, saddle-stitched booklets with heavyweight or preprinted covers up to 140 lb. Index. Output full-bleed spreads of facing pages on 12" x 18". Producing manuals or long documents? Use the Tab accessory to make color tabs to separate sections for that professionally published look in binders, directories and handbooks.



*The Ricoh Aficio 3260C is exceptionally versatile and is equipped with countless productivity and security features.*

## Simplicity in Design Enhances Productivity

The Ricoh Aficio 3260C consolidates all aspects of everyday business communications into a single, streamlined device. While some employees need to make copies, others need to print, and still others need to scan and send. But they all need it now with equal speed and urgency. The Ricoh Aficio 3260C is designed to handle it all. Fast original scanning and an enormous 7,400-sheet maximum paper supply make quick work of every job without interruption or contention – just what you need to support the variety of tasks common to busy, multi-user corporate departments. Versatile color Scan-to functions for efficient document storage and distribution complete the picture, allowing everyone in your department to be more productive.

The easier office equipment is to use, the more productive your employees will be. That's why Ricoh has designed the Aficio 3260C to be easy to operate, easy to maintain, and easy to get the desired results, every time.



*The system's Automatic Reversing Document Feeder handles one- or two-sided originals at scanning speeds of 60 images per minute for monochrome pages and 45 images per minute for color pages.*

## Simplicity in Collation

Send an entire job to a single system and stop worrying about programming or attending to several devices. Put an end to splitting jobs between multiple printers and manual collation tasks. The Ricoh Aficio 3260C easily handles color and black & white pages in one workflow, all in-house. A few mouse clicks deliver documents ready for immediate distribution.



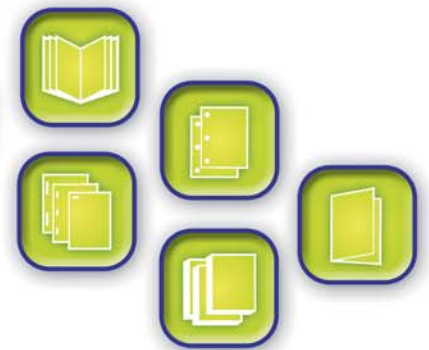
*Toner replacement is literally a three-step process with the new toner hopper system*



**Simplicity in Programming.** *The Ricoh Aficio 3260C control panel features an intuitive design with clearly labeled hard keys and easy to understand icons. This same ease of use is available through the Ricoh RPCS (Refined Print Command Stream) print driver.*

## Simplicity in Scanning

Whether scanning originals for copying, sending or archiving, the standard 100-sheet Automatic Reversing Document Feeder quickly captures one- or two-sided originals at speeds up to 60 ipm (images per minute) for monochrome documents and 45 ipm for color pages. The scanner detects the size of each original, while Automatic Paper Selection (APS) chooses the proper copy paper size automatically, eliminating waste and operator error. Plus, the system's Automatic Color Selection (ACS) intelligently determines which pages to reproduce in color or black & white – even when producing mixed document sets – to maximize speed and minimize cost.



*Choose from several high-capacity Finishers with multi-position stapling and/or hole punching, and even produce saddle-stitched, folded booklets in-house.*

## Simplicity in Maintenance

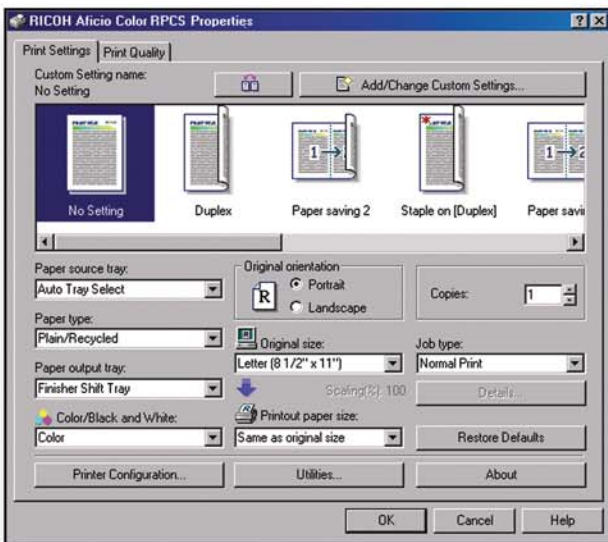
High productivity means easily accessible supplies and paper sources for minimal downtime. The Ricoh Aficio 3260C uses long lasting, easy-to-replenish toners that are simply placed into the toner hopper. The no-mess, oil-free process will be appreciated by casual users with little technological experience. The user-adjustable paper drawers automatically detect the loaded paper size, making additional programming unnecessary.

# Plug In to Seamless Connectivity

## Versatile Networking Support for Any Environment

The Ricoh Aficio 3260C is compatible with all of the most popular computing environments. The standard 10/100BaseTX Ethernet interface allows every user to share the power of high-speed color printing, while the USB 2.0 port enables peer-to-peer device access and control. Wireless connectivity simplifies printing for visiting executives, and allows you to realize the benefits of networked printing without being tied down to a LAN connection. The Ricoh Aficio 3260C may be configured with an optional IEEE 802.11b or Bluetooth wireless interface to meet your special connectivity needs.

The system is equipped with 1,384MB RAM and a 4 x 80GB Hard Disk Drive array to provide the space required to handle the constant flow of data traffic. Plus, the Ricoh Aficio 3260C employs Auto Switching technology, so it seamlessly adjusts to data streams generated by Windows®, Macintosh®, or UNIX clients in mixed-network environments – making it a great solution for the wide range of jobs produced by general business users every day.



Access and manage your document production system with just a few clicks of the mouse to optimize your printing productivity with Ricoh RPCS (Refined Print Command Stream).

## Ricoh Speaks Your Language

With standard support for the Ricoh RPCS and PCL 5c/XL page description languages and drivers, the Ricoh Aficio 3260C always understands your commands. Complete access to all system modes and functions is achieved with a few mouse clicks to optimize printing productivity. Optional genuine Adobe® PostScript® 3™ is ideal for Macintosh and UNIX users and for enhancing the work you do with more complex files. When you install the PostScript 3 option, you can also take advantage of the PDF Direct Print function to quickly output Acrobat files without launching the application.

# Beyond Paper, But Never Beyond Your Grasp

## Multifunction Means More than Copying and Printing

If information sharing and archiving are as critical to your business as hardcopy document production, utilize the Ricoh Aficio 3260C's full-color scanning capabilities to capture images and distribute documents paperlessly. By selecting a networked printer from the desktop, you can print directly at the desired location and enable instant document delivery without shipping boxes of paper. Speed communications by sending documents to hundreds of e-mail addresses or networked File/Folder/FTP destinations in a single operation at no cost. Or digitize hardcopy originals for incorporation into new documents with TWAIN scanning. The Ricoh Aficio 3260C makes it easy to convert scanned originals into industry standard TIFF, JPEG or PDF file formats. You control the level of detail and file size so authorized recipients can open, view and/or print documents exactly as they were created – in full-color.

## Scan Now, Print Later

Reduce the expenses and uncertainties of managing off-site document storage with the Ricoh Aficio 3260C's standard Document Server function. You'll never have to worry about lost documents or image quality degradation again. A portion of the system's enormous 4 x 80GB HDD array is reserved for local document storage. Scan, store and organize up to 3,000 documents according to your specific needs, then easily recall and reprint them on-demand with original image quality intact. Like an on-site document library, you can e-mail stored documents without rescanning, maintaining file integrity because the master file resides on the HDD until you decide to delete it.

Then, put innovative Ricoh utilities like DeskTopBinder to work to allow files created in various applications to be combined and published as a single, cohesive document. Once content is properly assembled, every employee has complete access to professional document production modes like duplexing and finishing – while you maintain total control over data security and user accessibility.



Visual overview of the Aficio 3260C's outstanding Scan-to imaging and document-distribution capabilities.

## Ricoh Makes Color Safe and Manageable

A number of unique Ricoh capabilities keep data safe and make full-color printing affordable for every business. LDAP Authentication ensures only authorized users with active usernames and passwords can access the system. Once access is granted, files and passwords can be protected by a number of advanced security and data encryption methods. There's even an optional HDD DataOverwriteSecurity System (DOSS) that automatically overwrites information after every copy, scan or print job using measures conforming to National Security Agency (NSA) methods for managing classified data.

If tighter control is desired, activate the Color Usage Restriction function, a tool that assures you're only paying for the color you use...and that lets you control the color usage activity of others. Of course, the Ricoh Aficio 3260C ships standard with a full suite of remote management utilities, including Web Image Monitor to track system use and status in real-time. Check or change printer settings, view job histories and device status, monitor toner and paper levels, reset print jobs or reboot the printer – without ever leaving your desk.



**The Ricoh Aficio 3260C: The new benchmark for high-speed color communications.**

Talk to your Ricoh sales representative to learn how you can put the power of Ricoh technology to work in your office.

### General Specifications

<b>Printing Process:</b>	4-drum Electrostatic Transfer System with Internal Transfer Belt and Dry Two-component Development
<b>Output Speed:</b>	Black & white: 60 ppm / Full-color: 45 ppm
<b>Multiple Copies:</b>	1 to 999
<b>Warm-up Time:</b>	300 seconds
<b>First Copy Time:</b>	Black & white: 6.5 seconds / Full-color: 7.5 seconds
<b>Copy Resolution:</b>	600 x 600 dpi
<b>Original Type:</b>	Books/Sheets/3D Objects
<b>Output Size:</b>	5.5" x 8.5" to 11" x 17", Full bleed output on 12" x 18"
<b>Maximum Image Area:</b>	11.69" x 18"
<b>Standard Paper Capacity:</b>	1,100 x 2 + 550 x 2 + 100 Bypass
<b>Optional Paper Supply:</b>	4,000-sheet LCT (Max. Capacity: 7,400 Sheets)
<b>Paper Sizes/Weights:</b>	Standard Tray 1: 8.5" x 11" / 14 - 34 lb. Bond (52.3 - 127.9 g/m <sup>2</sup> ) Standard Trays 2 & 3: Up to 12" x 18" / 14 - 34 lb. Bond (52.3 - 127.9 g/m <sup>2</sup> ) 100-sheet Bypass: Up to 12" x 18" / 14 lb. Bond - 140 lb. Index (52.3 - 256 g/m <sup>2</sup> ) 4,000-sheet LCT: 8.5" x 11" / 14 - 34 lb. Bond (52.3 - 127.9 g/m <sup>2</sup> )
<b>Paper Types:</b>	Plain paper, Recycled paper, Laser qualified transparencies
<b>Duplexing:</b>	Standard
<b>Output Tray Capacity:</b>	500 sheets
<b>Zoom:</b>	25% - 400% in 1% increments
<b>Reduction Ratios:</b>	93%, 85%, 78%, 73%, 65%, 50%, 25%
<b>Enlargement Ratios:</b>	121%, 129%, 155%, 200%, 400%
<b>Page Memory (LTR):</b>	Document Server stores up to 3,000 documents Maximum pages per document: 2,000 pages
<b>Power Source:</b>	120V / 20A, 60Hz
<b>Maximum Power Consumption:</b>	Less than 1,920W
<b>Dimensions (WxDxH):</b>	29.5" x 33.5" x 41.3" (750 x 850 x 1050 mm) excludes standard ARDF
<b>Weight:</b>	656.9 lbs. (298 kg) includes standard ARDF

### Printer Controller Specifications (Standard)

<b>CPU:</b>	Intel Celeron LV @ 733 MHz
<b>Memory:</b>	1,384MB RAM Std. / Max. (Shared) 4 x 80GB HDD = 320GB HDD (Shared)
<b>Page Description Languages:</b>	RPCS, PCL 5c, PCL XL, Adobe PostScript 3/PDF Direct Print (Optional)
<b>PCL Fonts:</b>	PCL: 45 fonts
<b>PostScript Fonts:</b>	136 Adobe PostScript Type 1 fonts (Optional)
<b>Print Resolution:</b>	600 x 600 dpi
<b>Standard Interfaces:</b>	10BaseT/100BaseTX Ethernet, USB 2.0
<b>Optional Interfaces:</b>	IEEE 1284/ECP Type A, IEEE 1394 Type B, IEEE 802.11b Wireless LAN Unit Type H, Bluetooth Type 3245 (Choose One)
<b>Network Protocol:</b>	TCP/IP, IPX/SPX, SMB (NetBIOS over TCP/IP) Apple Talk (Auto Switching)
<b>Drivers:</b>	RPCS, PCL 5c/XL and PS: Windows 95/98SE/NT4.0/2000/Me/XP/Server 2003 Netware 3.12, 3.2, 4.1, 4.11, 5.0, 5.1, 6 PS: Mac OS 8.6 - 9.2x, OS X 10.1 or later UNIX, Sun Solaris, HP-UX, SCO OpenServer, RedHat Linux, IBM AIX
<b>Utilities:</b>	SmartDeviceMonitor for Administrator and Client, Web SmartDeviceMonitor, Web Image Monitor, and DeskTopBinder Lite
<b>Security Features:</b>	<b>DataOverwriteSecurity System (DOSS) Type C:</b> (Optional): Security feature that overwrites latent data on the system's hard drive after copy, scan and print jobs. <b>Other Security Features:</b> Locked (Secure) Print, SSL Print, SNMP v3 Support, Windows Authentication

### Scanner Specifications

<b>Scanning Resolution:</b>	Full-color mode: From 100 - 600 dpi (1,200 dpi TWAIN) Monochrome mode: From 100 - 600 dpi Default Setting: 200 dpi
<b>Scanning Speed:</b>	Black & white: 60 spm; Full-color: 45 spm
<b>Scan Area:</b>	Maximum: 11.69" x 17"
<b>Original Size:</b>	5.5" x 8.5" to 11" x 17"
<b>Protocol Supported:</b>	Network: TCP/IP; Scan-to-Email: SMTP; Scan-to-Folder: SMP FTP
<b>File Format:</b>	Black & white: TIFF (Single/ Multi Page), PDF (Single/Multi Page) Grayscale: JPEG (Single Page) Full-color: PDF (Single/Multi Page)
<b>Scan-to modes supported:</b>	Scan-to-Email (with LDAP support), Scan-to-Folder FTP/SMB, Network TWAIN scanning

### Hardware Accessories

#### Automatic Reversing Document Feeder (Standard)

<b>Original Size:</b>	5.5" x 8.5" to 11" x 17"
<b>Original Weight:</b>	Simplex: 11 lb. - 34 lb. Bond (40 - 128 g/m <sup>2</sup> ) Duplex: 14 lb. - 34 lb. Bond (52 - 128 g/m <sup>2</sup> )
<b>Original Stack Capacity:</b>	100 Sheets
<b>Large Capacity Tray (Optional)*</b>	
<b>Paper Capacity:</b>	4,000 sheets (Letter), 2,500 sheets (Legal) **
<b>Paper Size:</b>	8.5" x 11", 8.5" x 14**
<b>Paper Weight:</b>	14 lb. - 34 lb. Bond (52 - 128 g/m <sup>2</sup> )

\*Requires LCT Adapter  
\*\*Requires Legal size conversion kit

#### 9-bin Mailbox (Optional)\*

<b>Number of Bins:</b>	9
<b>Stack Capacity per Bin:</b>	100 sheets
<b>Acceptable Paper Size:</b>	5.8" x 8.5" to 11" x 17"
<b>Acceptable Paper Weight:</b>	14 lb. - 34 lb. Bond (52 - 128 g/m <sup>2</sup> )

\*Cannot be used with SR841 Finisher or Interposer

#### SR841 3,000-sheet Finisher w/100-sheet Stapling (Optional)\*

<b>Number of Trays:</b>	2
<b>Paper Size:</b>	5.5" x 8.5" to 11" x 17"
<b>Acceptable Paper Weight:</b>	14 lb. Bond - 140 lb. Index (52 - 256 g/m <sup>2</sup> )
<b>Stacking Capacity:</b>	Proof Tray: 500 sheets (8.5" x 11" or smaller) 250 sheets (8.5" x 14" or larger) Shift Tray: 3,000 sheets (8.5" x 11" or smaller) 1,500 sheets (8.5" x 14" or larger)
<b>Staple Capacity:</b>	Up to 100 pages per set (8.5" x 11" or smaller) Up to 50 sheets per set (8.5" x 14" or larger)
<b>Staple Paper Size:</b>	8.5" x 11" to 11" x 17"
<b>Staple Paper Weight:</b>	17 lb. - 20 lb. Bond (64 - 84 g/m <sup>2</sup> )
<b>Staple Positions:</b>	Top, Bottom, 2 Staple, Top-Slant
<b>Finisher Accessories:</b>	Hole Punch Unit, Jogger Option

\*Requires Finisher Adapter

#### SR970 3,000-sheet Finisher w/50-sheet Stapling (Optional)

<b>Number of Trays:</b>	2
<b>Acceptable Paper Size:</b>	5.5" x 8.5" to 12" x 18"
<b>Acceptable Paper Weight:</b>	14 lb. Bond - 140 lb. Index (52 - 256 g/m <sup>2</sup> )
<b>Stacking Capacity:</b>	Proof Tray: 250 sheets (8.5" x 11" or smaller) 50 sheets (8.5" x 14" or larger) Shift Tray: 3,000 sheets (8.5" x 11" or smaller) 1,500 sheets (8.5" x 14" or larger)
<b>Staple Capacity:</b>	Up to 50 pages per set (8.5" x 11" or smaller) Up to 30 sheets per set (8.5" x 14" or larger)
<b>Staple Paper Size:</b>	8.5" x 11" to 11" x 17"
<b>Staple Paper Weight:</b>	17 lb. - 28 lb. Bond (64 - 90 g/m <sup>2</sup> )

<b>Staple Positions:</b>	Top, Bottom, 2 Staple, Top-Slant
<b>Finisher Accessories:</b>	Hole Punch Unit, Jogger Option
<b>SR980 2,000-sheet Finisher w/Saddle Stitch Stapling (Optional)</b>	
<b>Number of Trays:</b>	2
<b>Paper Size:</b>	5.5" x 8.5" to 12" x 18"
<b>Acceptable Paper Weight:</b>	14 lb. Bond - 140 lb. Index (52 - 256 g/m <sup>2</sup> )
<b>Stacking Capacity:</b>	Proof Tray: 250 sheets (8.5" x 11" or smaller) 50 sheets (8.5" x 14" or larger) Shift Tray: 2,000 sheets (8.5" x 11" or smaller) 1,000 sheets (8.5" x 14" or larger)
<b>Staple Capacity:</b>	Up to 50 pages per set (8.5" x 11" or smaller) Up to 30 sheets per set (8.5" x 14" or larger) Saddle Stitch: Up to 15 sheets
<b>Staple Paper Size:</b>	8.5" x 11" to 12" x 18"
<b>Staple Paper Weight:</b>	17 lb. - 28 lb. Bond (64 - 90 g/m <sup>2</sup> )
<b>Staple Positions:</b>	Top, Bottom, 2 Staple, Top-Slant, Saddle Stitch
<b>Saddle Stitch Paper Size:</b>	8.5" x 11", 8.5" x 14", 11" x 17", 12" x 18" SEF
<b>Finisher Accessories:</b>	Hole Punch Unit, Jogger Option
<b>Cover Interposer Tray (Optional)</b>	
<b>Stack Capacity:</b>	200 sheets
<b>Paper Sizes:</b>	5.5" x 8.5" to 11" x 17"
<b>Acceptable Paper Weight:</b>	17 lb. Bond - 110 lb. Index (64 - 216 g/m <sup>2</sup> )

### Other Optional Accessories

- Copy Tray \*If one of the finishers is not selected, the Copy Tray is required.
- Tab Sheet Unit
- 11" x 17" Tandem Tray Converter
- Legal Tray for LCT
- PostScript 3 Unit Type 3260
- Copy Connector Type 3260
- File Format Converter Type B

### Supplies

<b>Black Toner Cartridge:</b>	36K output/cartridge (LTR 5% coverage)
<b>Cyan Toner Cartridge:</b>	18K output/cartridge (LTR 5% coverage)
<b>Magenta Toner Cartridge:</b>	18K output/cartridge (LTR 5% coverage)
<b>Yellow Toner Cartridge:</b>	18K output/cartridge (LTR 5% coverage)
<b>Staple for 100-sheet Stapler:</b>	5,000 per cartridge
<b>Staple for 50-sheet Stapler:</b>	5,000 per cartridge
<b>Staple for Saddle Stitch Stapler:</b>	2,000 per cartridge

Ricoh Consumables: For maximum performance and yield, we recommend genuine Ricoh parts and supplies.

Specifications and external appearance subject to change without notice.



### Image Communication

Ricoh Corporation, Five Dedrick Place, West Caldwell, NJ 07006  
Phone: (973) 882-2000 • Web Site: <http://www.ricoh-usa.com>

Printed in U.S.A. on recycled paper because Ricoh cares.

Windows® and Windows® 95/98/Me/NT4.0/2000/XP/Server 2003 are registered trademarks of Microsoft Corporation. Macintosh®, Mac® OS and AppleTalk® are registered trademarks of Apple Computer, Inc. Adobe® and PostScript® are registered trademarks of Adobe Systems, Inc. PCL® is a registered trademark of Hewlett-Packard Company. BlackBerry® is a property and trademark of Research In Motion Limited. Ricoh® and Aficio® are registered trademarks of Ricoh Company, Ltd. RPCS™, SmartDeviceMonitor™ and DeskTopBinder™ are trademarks of Ricoh Company, Ltd. All other trademarks are the property of their respective owners.

