

# SHARP®



FO-DC535  
FO-DC635

document **communication** system



# fast, flexible performance for all your business needs

With the Sharp FO-DC535/DC635 Super G3 Document Communication Systems, you'll get everything you need in a high-volume facsimile ... and so much more. Designed for busy workgroups, these powerful performers deliver a speedy **16 pages per minute**, keeping up with the most demanding business environments. With a broad range of multifunction capabilities, the FO-DC535/DC635 can streamline your workflow with **advanced network scanning, network printing, web-based management and remote diagnostics**. Robust features include **Super G3 modem technology, JBIG compression, dual line capability, plus an easy-to-read 4.7" tilting LCD status display**. The FO-DC535 comes with a robust **750-sheet paper capacity**. For high-volume offices, select the FO-DC635 which offers a **Dual Line Kit and can be easily expanded to 1,250 sheets**. And with **Flash memory backup**, Sharp's integrated software, and an innovative modular design, the FO-DC535/DC635 Super G3 Document Communication Systems can easily grow as your business needs evolve.



## FEATURES AT A GLANCE

- Super G3 33.6 Kbps Modem
- 2-Second Transmission Time\*
- 1.3-Second Quick Scan
- 400-dpi Ultra-fine Transmission
- Large 4.7" Tilting LCD Status Display
- 50-Sheet Automatic Document Feeder
- 10" Scanning Width
- Semi-automatic Duplex Scanning
- Dual Line Kit (FO-DC635)
- 16-Page-Per-Minute Print Speed
- Sophisticated Security Features including Secure Fax Release and Menu Lock with Administrator Password Feature
- Document Memory Backup
- FO-DC535: 20 Personal Auto-Dial Phone Books with a Storage Capacity of up to 75 Numbers in Each (40 books on the FO-DC635)
- Serial Broadcasting to 179 Locations on the FO-DC535 and up to 279 locations on the FO-DC635
- Scheduled Inbound Routing
- Chain Dialing
- Automatic Cover Sheet
- Quick On-line Access
- Fax Separator Page
- Scan/Print Counter List

\*Based on ITU-T Test Chart #1 in standard resolution.  
Actual transmission time will vary based on line conditions.

# advanced features in a compact, modular design

## Large, easy-to-read display

With an ergonomic 4.7" tilting LCD status display, the new FO-DC535/DC635 Document Communication Systems are easy to read from a distance. Plus, you can adjust the screen to a viewing angle of up to 65 degrees, so clarity is never compromised. In conformance with Section 508 of the Rehabilitation Act, this flexibility allows the display to be comfortably viewed by users seated in wheelchairs.

## Expandable paper capacity

The FO-DC535/DC635 Document Communication System comes standard with a large 750-sheet paper supply, so meeting the needs of high-volume environments isn't an issue. Additionally, the FO-DC635 can be expanded with a 500-sheet paper drawer to bring its online capacity to a robust 1,250 sheets. And with letter/legal size adjustability in either tray, these productive facsimiles can easily meet the needs of busy offices and workgroups.

## Advanced auto-dialing for increased efficiency

With the most robust dialing capabilities in its class, the FO-DC535/DC635 Document Communication Systems really get things moving. In addition to 59 rapid dial (one-touch) keys and 100 speed dial (abbreviated) codes, the FO-DC535 offers 20 personal auto-dial phone books that enable users to store up to 75 numbers in each, for a total of 1,500 additional numbers. For even more automated dialing, the FO-DC635 offers 200 speed dial codes and 40 personal auto-dial phone books that can store an astounding 3,000 numbers. Plus, with tracking and PIN-code authorization, offices that have several departments can monitor inbound and outbound faxes for cost accounting.



FO-DC535

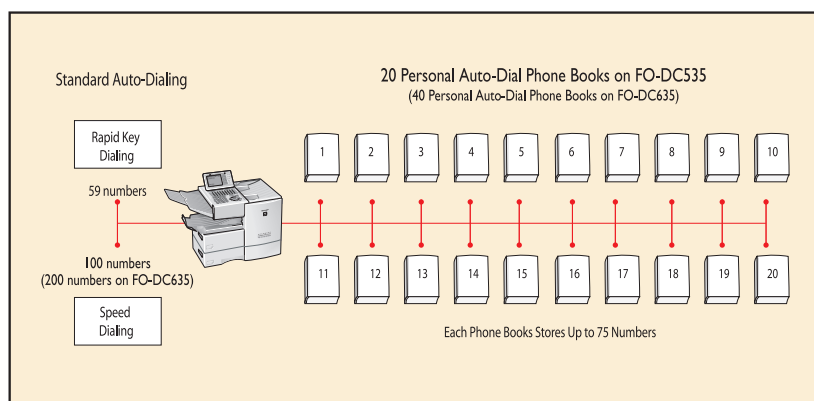
FO-DC635

## Reliable flash memory

With 8 MB of standard flash memory on the FO-DC535 and 16 MB on the FO-DC635, these powerful performers ensure that your important transmissions will be safe and secure in the event of a power surge or failure. And as your business needs grow, you can expand the memory to up to 16 MB on the FO-DC535, and up to 24 MB on the FO-DC635.

## Sophisticated security features

Need to keep your incoming faxes confidential? The Secure Fax Release feature requires users to enter a PIN code in order to retrieve faxes. This ensures confidentiality and helps your business maintain HIPPA-compliant status. Plus, with the new Menu Lock with Administrator Password feature, only authorized users can alter menu settings.



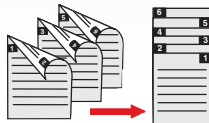
Advanced Auto Dialing provides one-touch access for up to 1,500 phone numbers (3,000 numbers on the FO-DC635)



# speed up your workflow with powerful features that get the job done.

## Semi-automatic duplex scanning

With **duplex scanning**, you can easily fax two-sided documents with the touch of a few buttons. Duplex scanning saves time and resources by eliminating the need to copy the pages before you fax them.



## Optional dual line kit

Need more power? With the optional **dual line kit**, the FO-DC635 delivers two Super G3 facsimiles in one single unit. Now you can simultaneously transmit and receive over two phone lines for added efficiency. With minimized broadcasting times, reduced busy signals on incoming faxes, and quick outbound faxing, the FO-DC635 can manage even the most demanding offices and workgroups.

## User-friendly interface

Operating and programming the FO-DC535/DC635 Document Communication Systems is incredibly simple. The **large 4.7" LCD status display** and intuitive menu design make it easy to operate—so you'll be up and running in minutes.



The large, 4.7" LCD screen displays up to eight lines of text. And since it tilts up to 65 degrees, the FO-DC535/DC635 facsimiles are easy to read at almost any angle.

(Shown: FO-DC635)



Face-down delivery



Optional 500-sheet adjustable paper tray (FO-DC635)



Easy-to-read tilted LCD display

# integrated software and modular options transform the FO-DC535/DC635 into a complete multifunction solution.

The Sharp FO-DC535/DC635 Document Communication Systems are designed to grow with your business, so you can easily add feature sets as your business needs change. With modular solutions that deliver network scanning, network printing, web-based management, and advanced diagnostics, Sharp makes it easy to leverage your investment with added value.

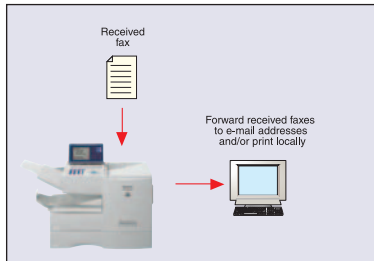
## Integrated Network Scanning

With Send to Desktop, Send to E-mail, Send to FTP, and Send to Group (e-mail/fax mixed), you can send your documents in an instant. Includes Sharpdesk™ document management software.



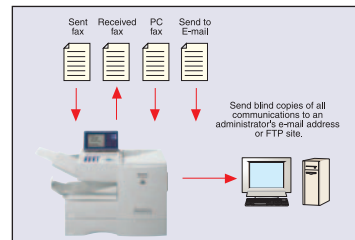
## Scheduled Inbound Routing

The Sharp FO-DC Series Inbound Routing feature automatically forwards inbound faxes to e-mail addresses for seamless distribution. You can even customize this feature to send faxes at specific dates and times. (Requires FO-NS2)



## Advanced Document Administration

Monitor and track all fax communications with the Advanced Document Administration function, which automatically forwards blind copies of all sent/received faxes, PC faxes, and Send to E-mail documents to an administrator's e-mail address or FTP site.



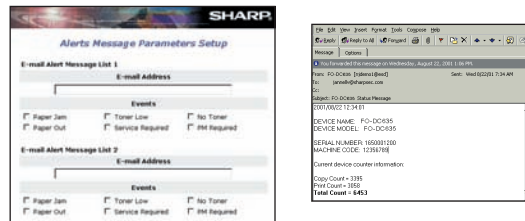
## Network Printing

Transform the Sharp FO-DC535/DC635 into a robust 16-ppm laser printer with the PCL6 Network Printing Kit. Included is Sharp's Printer Status Monitor and Printer Administration Utility for easy operation and management.



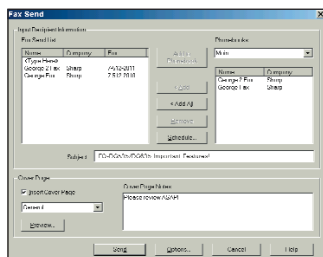
## Remote E-Mail Diagnostics

With Remote E-mail Diagnostics (R.E.D.), users, administrators or your Sharp service providers can automatically receive e-mail messages regarding specific conditions of your FO-DC535/DC635—so your workflow keeps moving.



## PC LAN Faxing

Save time and easily transmit documents right from your desktop PC. (requires FO-IN1)



## LAN-Based Remote Management

With F.A.S.T. (Facsimile Automated Service Technology) Remote Diagnostics System, your authorized Sharp dealer can monitor and diagnose potential problems right over the Internet—minimizing costly downtime.



# FO-DC535

# FO-DC635 specifications

Applicable Telephone Line:	Public Switched Telephone Network (PSTN)
Compatibility:	ITU-T G3
Compression Scheme:	MH, MR, MMR, JBIG, Sharp special
Memory Size:	FO-DC535: 8 MB Standard (approx. 500 pages) FO-DC635: 16 MB Standard (approx. 1,000 pages) <sup>1</sup>
Paper Capacity:	FO-DC535/635: 750 pages (adjustable cassette) (500 + 250 sheets) FO-DC635: Optional 500-sheet cassette available
Modem Rate:	33,600 bps with auto fallback <sup>1</sup>
Transmission Time:	2 seconds per page <sup>1</sup>
Scan Speed:	1.3 seconds per page
Print Speed:	16 pages per minute
Resolution in Text Mode:	Standard: 200 x 100 dpi (100 lines/inch) Fine/Half-tone: 200 x 200 dpi (200 lines/inch) Super-fine: 200 x 400 dpi (400 lines/inch) Ultra-Fine: 400 x 400 dpi (400 lines/inch)
Recording System:	Laser
Reception Modes:	Auto/Manual
Effective Scanning Width:	10.0 inches
Effective Recording Width:	8.0 inches
Paper Stack Capacity:	200 sheets
Input Document Size:	<ul style="list-style-type: none"> <li>Width: 5.8" to 11" (148 mm to 280 mm)</li> <li>Length: 5.0" to 19" (128 mm to 432 mm)</li> </ul>
Automatic Document Feeder:	50 sheets maximum
LCD Display:	4.7" QVGA screen 320 x 240 dot
Half-tone (grayscale):	64 levels
Copy Function:	Single/Multi-copy/Sort-copy (99 copies/page)
Menu Lock:	Standard
Power Requirements:	120 V AC, 60 Hz
Remote Fax Management:	F.A.S.T. PSTN-based remote diagnostics system F.A.S.T. LAN-based remote diagnostics system <sup>2</sup>
Dimensions:	21.5" (W) x 16.2" (D) x 17.0" (H)
Weight:	48.5 lbs.

## LAN Interface Expansion Kit FO-LN1 (optional)

Operating System:	Windows® 98 2nd edition/ME/2000/NT4/XP and Win 2003 Servers (for FO-NP1 only)
Protocol:	TCP/IP; 10/100 baseT Ethernet
Web-based Management:	Standard
PC-LAN Faxing:	Standard

## Network Scanner Expansion Kit FO-NS2 (optional)<sup>2</sup>

Scan Resolution:	200 dpi (true optical)
Data Format:	PDF, TIFF
Document Management Software:	Sharpdesk™ (includes OCR)
Send to E-mail/Desktop/FTP:	Standard
Send to Group (e-mail/fax mixed):	Standard
Inbound Fax Routing:	Standard
Advanced Document Administration	Standard

## Network Printing Expansion Kit FO-NP1 (optional)<sup>2</sup>

Print Speed:	16 ppm
Print Resolution:	600 dpi
Printer Description Language:	PCL6/PCL XL
Memory:	16 MB; 128 MB maximum

## Accessories & Options

500-sheet Paper Drawer:	FO-CS2 (for FO-DC635)
8 MB Flash Memory:	FO-8MK
LAN Interface Kit:	FO-LN1
Network Scanner Expansion Kit:	FO-NS2
Network Printer Expansion Kit:	FO-NP1 <sup>3</sup>
Dual Line Kit:	FO-60DL <sup>3</sup>
Verification Stamp:	FO-45VS
Deluxe Cabinet:	FO-53ABD

## Sharp Genuine Supplies for the FO-DC535/DC635

Toner Cartridge:	FO-50ND
Drum Cartridge:	FO-47DR

<sup>1</sup> Based on ITU-T Test Chart #1 in standard resolution. Actual transmission time will vary based on line conditions.

<sup>2</sup> Requires FO-LN1 LAN Interface Expansion Kit.

<sup>3</sup> FO-NP1 and FO-60DL cannot be used in conjunction.



As an ENERGY STAR® Partner, Sharp has determined that this product meets the ENERGY STAR® guidelines for energy efficiency.



SHARP ELECTRONICS CORPORATION  
Sharp Plaza  
Mahwah, NJ 07430-2135  
1-800-BE-SHARP  
[www.sharppusa.com](http://www.sharppusa.com)

Design and specifications subject to change without notice. Sharp is a registered trademark of Sharp Corporation. All other trademarks and registered trademarks are property of their respective holders.